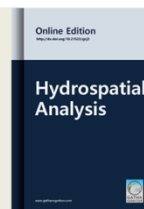




Hydrospatial Analysis

Homepage: www.gathacognition.com/journal/gcj3
<http://dx.doi.org/10.21523/gcj3>



Original Research Paper

Use of Geospatial Techniques for Groundwater Potential Zone Mapping from Phonda Basin in Sindhudurg District, Maharashtra: A Geological Influence Approach



Krushnath D. Shirke*, Kunal Bandivdekar

Department of Geology, Savitribai Phule Pune University, Pune - 411007 (India).

Abstract

The study was conducted to find out the groundwater potential zones (GWPZ) by using geospatial techniques in Phonda basin in Sindhudurg district of Maharashtra (India). Analytical Hierarchical Process (AHP) was used to demarcate the GWPZ using thematic layers: geology, geomorphology, lineament density, drainage density, elevation, slope, soil, rainfall and land use land cover (LULC). The ranks were assigned for each individual parameter of thematic layer and weights assigned to each thematic layer and final groundwater map was prepared by intersection all thematic layers in Arc GIS environment. GWPZs were categorized as: low, moderate, high and very high. Geological factors are influencing groundwater potentials according to geological formations and human activities. Geological influence approach of delineating the GWPZ is useful for planning and monitoring the groundwater resource for sustainable development.

Article history

Received: 05 March 2019

Revised: 13 May 2019

Accepted: 14 June 2019

Keywords

Geospatial Techniques;
 Geology;
 Groundwater;
 Potential Zones;
 GIS;
 AHP.

Editor(s)

P. S. Hire

© 2018 GATHA COGNITION® All rights reserved.

1 INTRODUCTION

Water is the most existing resource on the Earth essential for life. Groundwater is the 'god gift' natural source for living things for their life survival. Groundwater is a precious and the most widely distributed resource of the Earth and unlike any other mineral resource, it gets annual replenishment from the meteoric precipitation. Groundwater resources are important natural resource for domestic, agricultural, and industrial purposes (Kadam *et al.*, 2019). There has been a tremendous increase in the demand for groundwater due to increase in population, advanced irrigation practices and industrial usages. Groundwater is a significant natural resource in present day, but frequent failures in monsoon, undependable surface water, and rapid urbanization and industrialization have been created a major risk to this valuable resource (Ramamoorthy and Rammohan, 2015). In Maharashtra, some areas over-exploitation has been caused declining groundwater levels and has consequently limited groundwater flow to deeper fractured zones (Kumar *et al.*, 2011; Maiti *et al.*, 2012). Further, in recent years,

population explosion, growing industry and advances in science and technology are resulted into the need of analyses of groundwater.

The remote sensing and geographical information system is a component of geospatial techniques. It is a very powerful tool for processing, analyzing and integrating spatial data sets. The integration of Remote Sensing (RS) and Geographic Information System (GIS) has been proven to be efficient, rapid and cost effective technique producing valuable data on geology, geomorphology, lineaments and slope as well as a systematic integration of these data for exploration and delineation of groundwater potentials zones (GWPZ) (Fashae *et al.*, 2014; Shailaja *et al.*, 2019). With the advent of remote sensing and geographic information system (GIS) technologies, the mappings of GWPZ within each geological unit have become an effortless procedure (Naveenkumar *et al.*, 2015; Kadam *et al.*, 2017; Singhai *et al.*, 2019). They are used to identify the geology, geomorphology, soil, lineament density,

* Author address for correspondence

Department of Geology, Savitribai Phule Pune University, Pune - 411007 (India).

Tel.: +91 9011257778

E-mails: rushnathshirke@gmail.com (K. Shirke -Corresponding author), kunalbandivdekar10@gmail.com (K. Bandevdkar).

<http://dx.doi.org/10.21523/gcj3.18020205>

© 2018 GATHA COGNITION® All rights reserved.

drainage density, rainfall and land use for maps that indicate the occurrence of groundwater (Shailaja *et al.*, 2019). Rao *et al.* (2004) have studied the integration of groundwater resources evaluation using the remote sensing techniques. Each of this has been considered and with the use of geospatial data as a reference to compute these layers. The geospatial approach is widely used for the development and management of various natural resources (Kadam *et al.*, 2012; Gashaw *et al.*, 2017).

The analytical hierarchical process (AHP) in overlay analysis based on GIS technique was used to delineate the GWPZ by Nag (1998), Sikdar *et al.* (2004), Prasad *et al.* (2008), Teixeira *et al.*, (2008), Kumar *et al.* (2008), Nagarajan and Singh (2009), Sukumar and Sankar (2010) and Shailaja *et al.* (2019). AHP is a multi-criteria decision making process of measurement over and done with pair wise comparisons and depends on the knowledge of the experts to build priority index. AHP method is used to develop the weights associated with attribute map layers (Patil and Panhalkar, 2019; Shailaja, *et al.*, 2019).

The occurrence of groundwater at any place on the earth is not a matter of chance but a consequence of the interaction of the climatic, geological, hydrological, physiographical and ecological factors. Groundwater exploration operation is essentially a hydro-geological and geophysical inference operation and depends on the correct interpretation of the hydrological indicators and evidences (Arkoprovo *et al.*, 2012).

In study area covered by varied geological formations in Deccan trap, Kaladgies and some Precambrian metamorphic rocks. The occurrence of groundwater is varied as per lithology; in the case of study area occurrence of groundwater is different for different places. Sub-horizontally disposed Precambrian un-Metamorphosed sedimentary strata exposed widely in scattered outcrops in a part of Phonda region and surrounding area. These rocks are primarily a sandstone-shale gradation and intercalation sequence with some carbonaceous shale (black shale) intercalation (Kshirsagar and Jadhav, 2000). Therefore, the remote sensing and scientific data generation related to identification of GWPZ were considered essential. It is expected that the results of the study entitled by the lithological characteristic is affected by hydrological condition and the research is followed by an analysis of geological factors influencing groundwater potential zones (GWPZ) by using geospatial techniques in Phonda and surrounding area of Sindhudurg district, Maharashtra. Can be of immense validated for the realization of programs related to watershed development and management.

2 STUDY AREA

The study area (51km²) is situated in Northwest part of Sindhudurg district, Maharashtra, India, between 16° 21'

to 16° 24'N and 73°46'30" to 73°51'E. It includes villages: Phonda, Bhalekarwadi, Gadagesakhawadi, Hulewadi, Ghonsari and Pavanadevi in Kankavali taluka of Sindhudurg district (Figure 1). About 60 % of the area is under open scrub and dense forest of Radhanagari and Dajipur. The annual average rainfall is 3331mm (1979-2013) based on records from Indian Meteorology Department (IMD). Physiographically, the area is flat in Southwest part of the basin and hills are observed in Northeast section. It is situated in hills, valleys and undulating terrains due to tectonic and geomorphic processes. The Eastern part is made up of hilly region at Phondaghat section (Deccan trap) and the Central part of the area shows in-situ laminates and massive litho-bodies covered with laterite. The general slopes are in South-Southwest directions. The area is covered by number of streams generated from hilly region. Janavali River flows towards Southwest and shows dendritic drainage pattern. The minor streams expose bed rock, rocky outcrops and litho-section at some places.

3 MATERIAL AND METHODS

Identification and delineation of GWPZ in study area was performed using remote sensing data procured from various organizations. The data is downloaded from open and non-open sources and processed in GIS software.

ALOS PULSAR satellite imagery (February, 2010) was used to prepare the land use land cover map. The geological map was prepared using district resource map from Geological Survey of India (GSI, 2001, 2005). The drainage density and lineament density were prepared using the density analysis tool in ARC GIS 10.3. The rainfall distribution map was prepared using data recorded at different raingauge stations and available at www.weather.tamu.in. The integration method of AHP was adopted to combine all thematic layers by assigning rank and weightage for each thematic layer. This is a simple method to analyze multiclass maps based on the relative importance of each thematic layer and to each sub-categories. Several studies have reported the relative importance of various thematic layers that control the groundwater potentials. The weights for selected thematic layers were assigned based on Saaty's (1980) scale. Suja Rose and Krishnan (2009), Nag and Ghosh (2012) and Agarwal *et al.* (2013) have suggested the weightages based on Saaty's (1980) scale for different thematic maps and these thematic maps are intersect in each other and then these classified into classes: low, moderate, high and very high to delineate GWPZ. The individual layers and classes are assigned weightage and ranks: 0.6-0.9 (low), 0.09- 0.12 (moderate), 0.12-0.19 (high) and 0.19-0.28 (very high). Higher weightage and ranks are given to the sites that are expected to have high groundwater potential (Table 1).

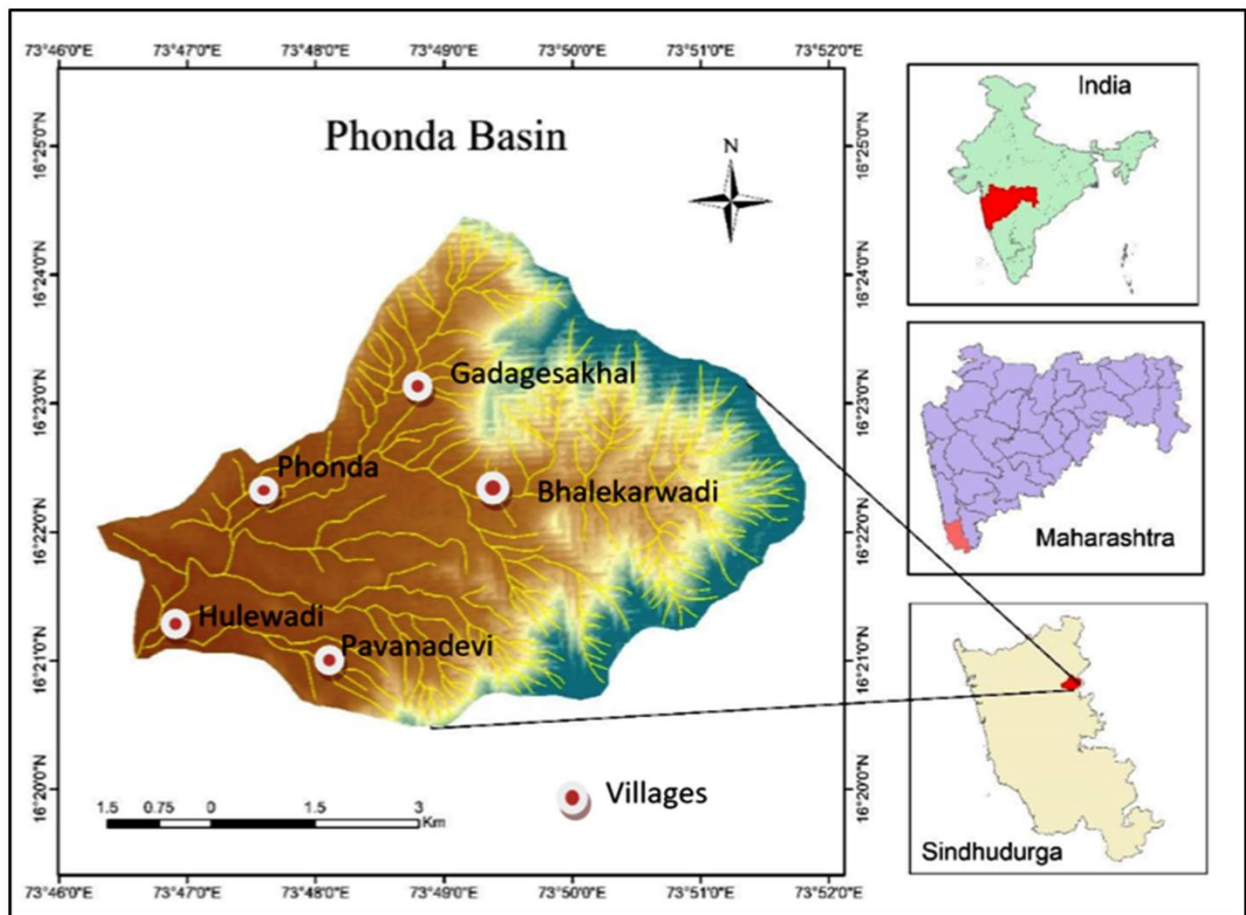


Figure 1. Study area: Phonda Basin

In order to assess groundwater potential in the study area, nine thematic maps viz., geomorphology, lithology, elevation, slope, lineament density, drainage density, soil, rainfall and land use land cover were prepared using remote sensing and conventional data with the help of ARC GIS environment.

AHP analyzes different datasets into a pairwise matrix to calculate geometric mean and normalized weight of parameters (Chowdhury *et al.*, 2009). Assignment of weights and normalization the weights were decided based on field experience and expert opinions. Thus, the weights assigned to different thematic maps and their individual features were normalized by using Saaty's AHP method. The normalization process reduces the subjectivity associated with the assigned weights of the thematic maps and their features. The normalized weights of the thematic layers and those of their features were examined for consistency as recommended by Saaty (1980). Saaty (1980) suggested computing consistency ratio (CR) for this purpose. The following steps were followed to compute CR for each theme and feature:

Step 1: Principal eigenvalue (λ) was computed by eigenvector technique.

Step 2: Consistency index (C_i) was calculated from the equation (equation (1)) (Saaty, 1980) -

$$C_i = \frac{\lambda_{max} - 1}{n - 1} \quad (1)$$

where,

λ_{max} is sum of normalization average and n is the number of criteria or factors.

Step 3: Finally, CR was calculated as (Saaty 1980) -

$$CR = C_i / RC_i \quad (2)$$

where, RC_i is random consistency index. The value of RC_i was obtained from the saaty's 1-9 scale. The value of CR should be less than 10% (Saaty, 1980) for consistent weights; otherwise the corresponding weights should be re-evaluated to avoid inconsistency.

The thematic layers: geology, geomorphology, slope, land use and land cover, soil, elevation, drainage, lineament and rainfall were analyzed by AHP approach including geometric mean and normalized weight calculation to explore the potential zone for groundwater recharge.

4 RESULTS AND DISCUSSIONS

Groundwater availability mainly depends on geology, geomorphology, soil, lineament density, drainage density, rainfall and land use. Hence, all the thematic maps pertaining to the study area were prepared.

4.1 Geology

The geological map (Figure 2) is prepared from district resource map of Sindhudurg from Geological Survey of India in Arc map 10.3 software. Geologically, the study area vary in different lithology such as igneous mostly Deccan trap basalt, 'aa' type, sedimentary like sandstone, sedimentary quartzite, and sandstone with intercalation shale, these sedimentary rocks belong to Kaladgi super group named as 'Kokankaladgi'. Some metamorphic lithology such as schist and gneisses, and it belongs to Dharwarian rocks. In igneous rock like basalt, water storage and transmitting capacity depends on its vascularity and jointing pattern. The basalt of study area is mostly 'aa' type of lava formation and consists of vesicular and spaced jointed show better groundwater potentiality.

The sandstone consists of coarse sand particles results of greater intergranular spaces and this intergranular spaces are very good aquifer to store and transfer the groundwater. The sandstone is slightly in sand (70%) and clay (30%) composition. The sedimentary shale is a type of aquiclude (maximum store the water and minimum or not transmit the groundwater), the shale consist of clay minerals.

In metamorphic rocks, it belongs to Dharwarian super group of Precambrian era, these rocks consist of Schistosity and Gneissosity. Schistosity is mineral arranged in parallel manner, and Gneissosity is alternate bands of schistose and granulose (quartz). Planes in these rocks are weak and this planes are useful to flow the groundwater but consequently, very poor in characters.

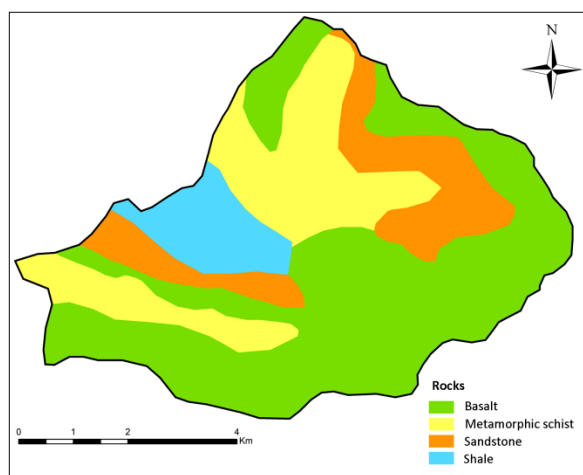


Figure 2. Geology

4.2 Geomorphology

The identification of geomorphologic features is very important for demarcating groundwater potential. The major geomorphologic features are hills, denudational, structural and water body (Figure 3). Hills and valleys of Phondaghat section at above 250m from MSL, the ranks are assigned to low because of more runoff and less infiltration rate. The denudational landforms are those formed by combined effect of weathering and erosion of upper basaltic hills and they have deposited foot of hills show more infiltration rate than the hilly region, so ranked higher. The structural geomorphology shows various tectonic structures like folds, faults or lineaments and formed in tectonic process from Kaladgi and Bhima basin and Dharwar craton. The store and transfer capacity of groundwater is more in these structural features than the denudation. They are observed in the form of Janavali River flows through Southwest part of study area. The water storage capacity of the rock is very strong and all streams are recharging them therefore, the ranks assigned higher.

4.3 Lineaments

Lineaments are linear features useful to delineate ground water potential zones. Surface lineament map was prepared using the data downloaded from Bhuvan NRSC (2011). Lineaments are the sharp linear features indicated by six tones color (Figure 4). The study area shows six lineaments. Lineaments were mainly found along the Northwest-Southeast and Northeast-Southwest directions, and a very few are along the East-West and North-South directions (Figure 4). Lineaments play a very important role in recharging groundwater in the hard terrains rock (Koch *et al.*, 1997). Groundwater potential is more near to lineament zones.

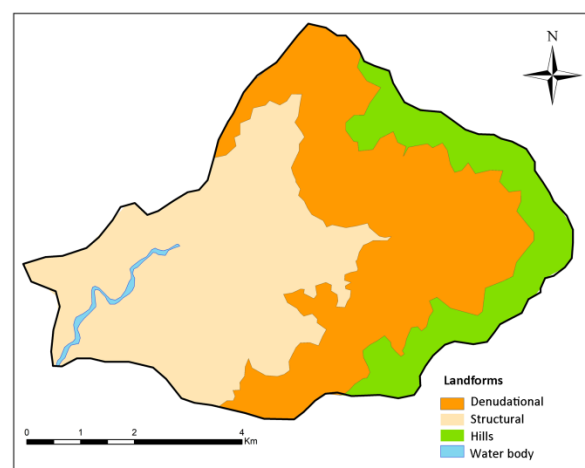


Figure 3. Geomorphology

The lineament density was estimated using the line density tool in Arc map 10.3 software. Polygons with higher values of lineament density will achieve greater recharge and hence a better prospects for groundwater. Lineament density was classified into: 0-0.5423, 0.5423-1.0840, 1.0840-1.6270, 2.1694-2.7117 and 2.7117-3.2542.

4.4 Elevation

Elevation of the area is an indicator of infiltration rate. The places with higher elevation show less infiltration rate than the foothill zones (Figure 5). Relationship between the elevation and ground water were estimated based on basis two classes prepared using DEM. The lowlands show more groundwater potentials and assigned higher weightages as compared to hilly areas.

4.5 Slopes

Slope map was prepared from ALOS pulsar DEM (12.5m). Greater portion of the area is rugged hilly terrain except the upper part with steep slopes varies from 33% to 63%. Slope range was classified into five groups: 0-7.10, 7.1-150, 15-230, 23-330 and 33-630 (Figure 6). Higher slopes produce more runoff with lesser infiltration and show poor groundwater prospects where as more groundwater in the areas with lower slopes. Therefore, the higher weights were assigned to gentle slope and lesser to higher slope (Table 1).

4.6 Soils

Soil map was prepared using the district resource map (GSI) and satellite imageries. Mainly two soil types: red earths and red sandy soils in the region were ranked based on their groundwater expectations. The sandy

soils are very highly permeable, light textured and well drained, and rate of infiltration is excellent (Figure 7). Red earth soils are moderately well drained and possess of fine loams. The moisture content of the soil is very nice because of its fine loamy texture. The green forest soil is rich in humus.

4.7 Drainage density

The drainage network in study area was delineated from SOI toposheet (47 h/15) and digitized in Arc map 10.3 software and categorized into 6 classes. The drainage density (Figure 8) was calculated (Miller, 1953) as 'total length of streams divided by the sub-basin area (stream length/area)' and expressed as km/km². It was estimated about 0.024 m-1 and estimated values were grouped into six classes: 0-2.8, 2.9-5.6, 5.7-8.4, 8.5-11, 12-14, and 15-17. A low drainage density region causes higher infiltration and show better groundwater potential. The higher weight was given to the region with low drainage density and lesser weight to the region of high drainage density.

4.8 Rainfall

Rainfall is the source of water to percolate into the rocks and groundwater system. Western part (Figure 9) of the area receives more amount of rainfall while the Southern part receives the lesser amount of rainfall. High rainfall is favorable for high groundwater potential, hence assigned higher weights. Rainfall in the region was categorized into: 3670-3720, 3720-3770, 3770-3810, 3810-3870, 3870-3910, 3910-3960, 3960-4010 and 4010-4060mm rainfall classes.

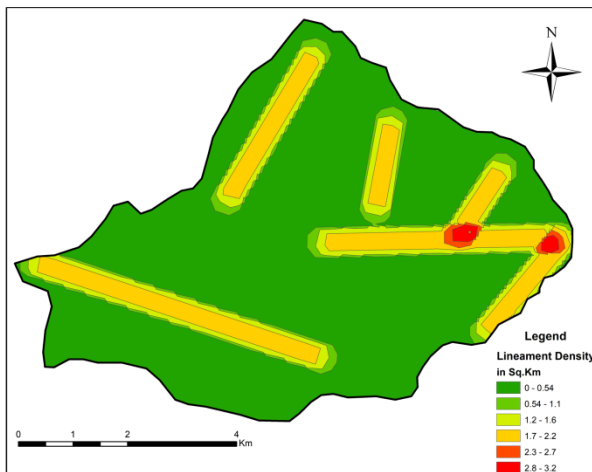


Figure 4. Lineaments

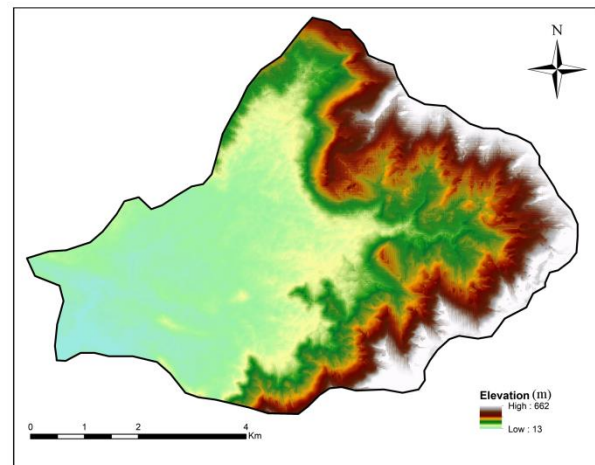


Figure 5. Elevation

Table 1. Weightages and ranking of criterion based on AHP

Thematic layer	Weights	Criterion	Ranks	AHP
Drainage density	9	0.0-1.0	6	$C_r =$ 0.060891059 $C_i =$ 0.075504913
		1.1-2.0	5	
		2.1-3.0	4	
		3.1-4.0	3	
		4.1-5.0	2	
		5.1-6.0	1	
Geology	8	Metamorphic	1	
		Shale	2	
		Basalt	3	
		Sandstone	4	
Rainfall	7	3670 - 3720	1	
		3720 - 3770	2	
		3770 - 3810	3	
		3810 - 3870	4	
		3870 - 3910	5	
		3910 - 3960	6	
		3960 - 4010	7	
		4010 - 4060	8	
Lineament	4	000 - 0.54	1	
		0.54 - 1.1	2	
		1.2 - 1.6	3	
		1.7 - 2.2	4	
		2.3 - 2.7	5	
		2.8 - 3.2	6	
Geomorphology	5	Hills	1	
		Denudational	2	
		Structural	4	
		Water body	6	
Soil	4	Moderately drained loam	1	
		Excessively drained	3	
		Well and excessively drained	5	
		Well drained	6	
Slope	3	0-7.1°	5	
		7.1-15°	4	
		15-23°	3	
		23-33°	2	
		33-63°	1	
Elevation	2	13-112	5	
		112-216	4	
		216-333	3	
		333-468	2	
		468-659	1	
LULC	1	Settlement	1	
		Barren rocky land	2	
		Fallow land	4	
		Vegetation	5	
		Water body	6	

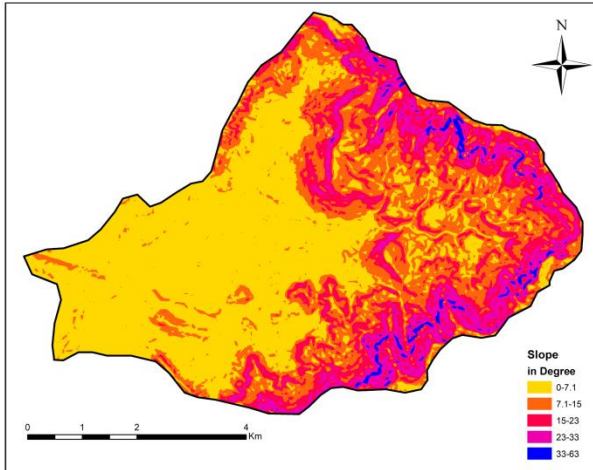


Figure 6. Slopes

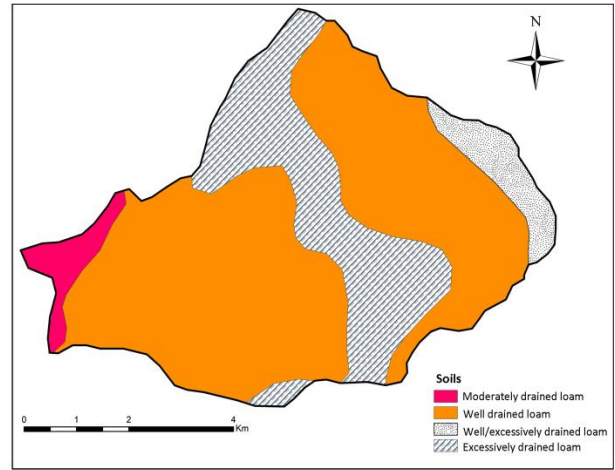


Figure 7. Soils

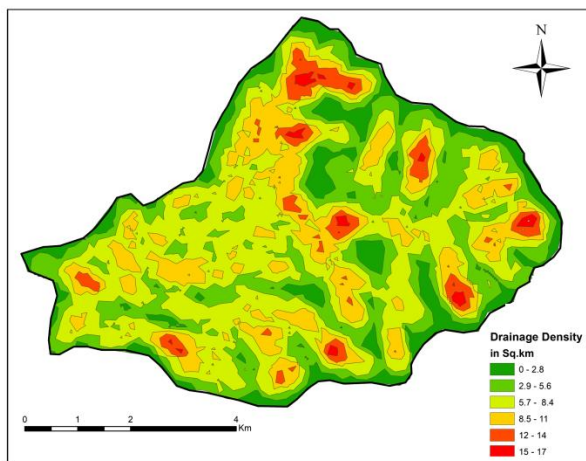


Figure 8. Drainage density

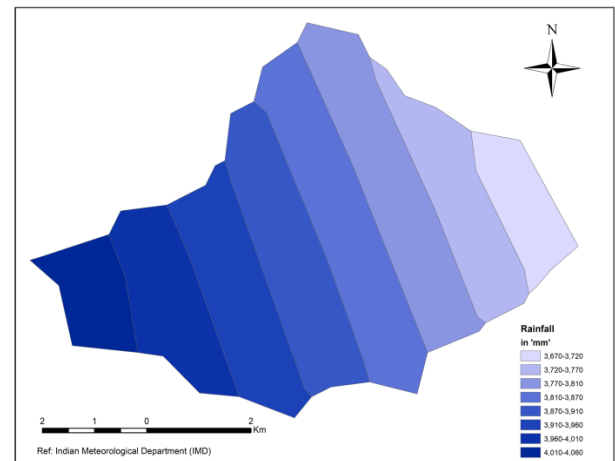


Figure 9. Rainfall

4.9 Land Use Land Cover

Land use/land cover (LULC) map (Figure 10) was prepared from Sentinel pulsar data (2010) using maximum likelihood algorithm technique in supervised classification. Five classes were distinguished: (i) water bodies, (ii) vegetation, (iii) settlement (iv) fallow land, and (v) barren rocky land. These LULC were weighted based on their water requirement. The water bodies were given the highest weight than other land use features since its incessant recharge to ground, ensued by vegetation (forest and agriculture) only, which pull maximum amounts of water from the deep root zone for sustaining, resulting the present of water below the ground surface. Vegetation was weighted higher than dense forest and agriculture was given less weightage after fallow land since crops require huge amount of water and thus it acts as a good groundwater recharge. Barren rocky land is open space without vegetation. The barren rocky land is formed due to mining activity. There are number of mines increase the groundwater storage capacity. The settlement computed the lower

weightage because increasing urbanization needs to over exploitation of groundwater and affects the local hydrology.

4.10 Groundwater Potential Zones

AHP method was used for delineating the groundwater potential zones (GWPZ) in study area. AHP has been calculated by integrating 9 thematic layers viz. Geology, Geomorphology, Slope, Relief, Rainfall, Lineament density, Drainage density, Elevation and Land use land cover. Pairwise comparison of all thematic layers and its classes (sub-criteria is done for calculation of consistency ratio and priority vectors (Table 1). The sum of these AHP weighted values (priority vector) is found within a range of 0.063 to 0.28. This range is grouped into four categories based on standard deviation classification of groundwater potential area: low 0.063-0.13, moderate 0.13-0.15, high 0.15-0.18 and very high 0.18-0.28 (Figure 11).

GWPZ mapping based on AHP and geospatial techniques reveals very high and high potential zones in

Southwest (downstream direction) and Northeast part of study area whereas moderate potential is observed scattered. Low groundwater potential is shown in Northern and some Eastern parts (elevated region). Near about 40% land of the study area classified under moderate and very high GWPZ. Moderate potential zones are dominated by geological unit of sandstone, shale and basalt and geomorphological units are structural, denudational, water body and hilly region with structural features of high lineament density in Northeast part. Low GWPZ depicts the area with metamorphic terrain. The mining activity observed in central part with moderate potential zones. The hydro-geomorphic features in this portion are consist of hilly terrain having large patches of Radhanagari forest at higher levels and cultivated land at lower levels.

5 CONCLUSIONS

In the present study, GIS technique has been successfully adopted for delineating GWPZ using

different parameters using AHP method. Four categories of GWPZ have been identified as: 1) very high, 2) high, 3) moderate and 4) low. Maximum groundwater potential lies in moderate zone which has the metamorphic terrain in middle part of the basin near Gadagesakhal. Bhalekarwadi shows low groundwater potentials. Moderate groundwater potential is seen in the area having sandstone which has composition of clayey material, this clayey material is a type of aquiclude (store water but transmit capacity is low). The mining sector denotes higher groundwater potentials because more water storage and infiltration capacity. High groundwater potential is observed in Southwest (near Pavanadevi), and Northeast (near Gadagesakhalwadi and Bhalekarwadi) part of study area. Very high groundwater potential zone is demarcated in the area with Deccan basalt having vesicular and vertical joints which represent high storage and transmitting capacity.

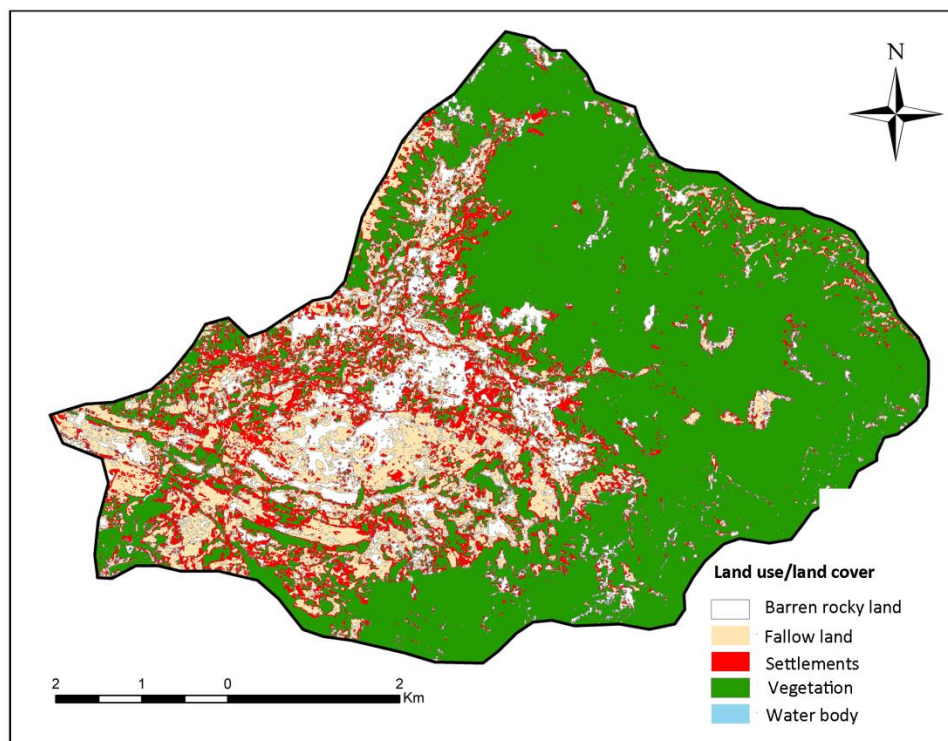


Figure 10. Land use land cover

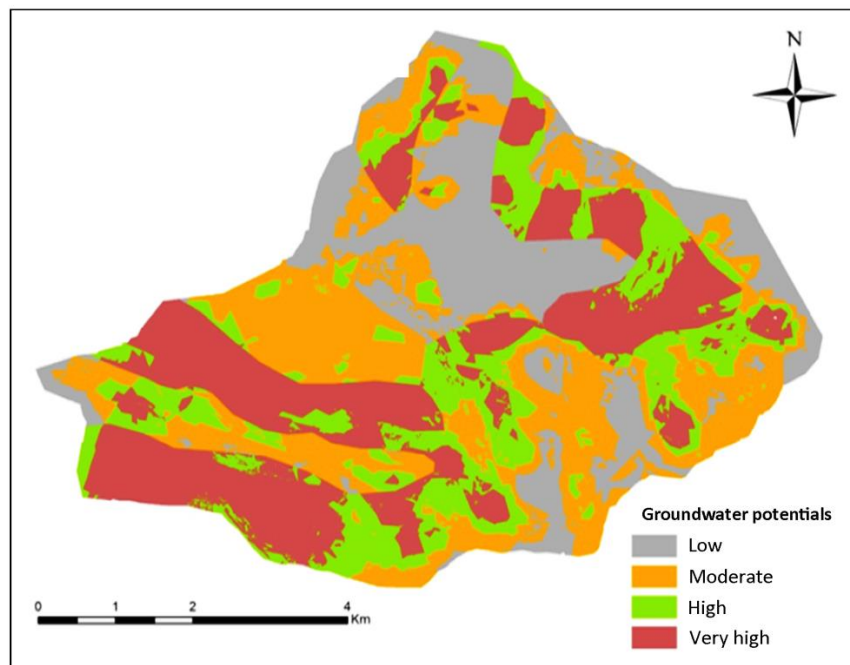


Figure 11. Groundwater potential zones

CONFLICT OF INTEREST

The authors declare no conflict of interest.

ACKNOWLEDGEMENTS

Authors would like to thank the reviewers for fruitful and meaningful suggestions that led to considerable improvement in quality of the paper. The study was parts of course work for the Diploma in GIS by Second Author from Department of Geography, Shivaji University Kolhapur, Maharashtra (India). We would also sincerely thankful to former Head and Professor J. Pishte for his valuable Guidance.

ABBREVIATIONS

AHP: Analytical Hierarchical Process; **ALOS:** Advanced Land Observing Satellite; **CR:** Consistency Ratio; **GIS:** Geographic Information System; **GWPZ:** Groundwater Potential Zones; **IMD:** Indian Meteorology Department; **MSL:** Mean Sea Level; **RCI:** Random Consistency Index; **RS:** Remote Sensing; **SOI:** Survey of India; **GSI:** Geological Survey of India.

REFERENCES

- Agarwal, E., Agarwal, R., Garg, D. and Garg, P. K., 2013. Delineation of groundwater potential zone: An AHP/ANP approach. *Journal of Earth System Science*, 122(3), 887-898. DOI: <https://doi.org/10.1007/s12040-013-0309-8>
- Arkoprovo, B., Adarsa, J. and Prakash, S. S., 2012. Delineation of groundwater potential zones using satellite remote sensing and geographic information system techniques: a case study from Ganjam district, Orissa, India. *Research Journal of Recent Sciences*, 1(9), 59-66.
- Chowdhury, A., Jha, M. K., Chowdary, V. M. and Mal, B. C., 2009. Integrated Remote Sensing and GIS-based approach for assessing groundwater potential in West Mednipur District, West Bengal, India. *International Journal of Remote Sensing*, 30, 231-250. DOI: <https://doi.org/10.1080/01431160802270131>
- Fashae, O. A., Tijani, M. N., Talabi, A. O., Adedeji, O. I., 2014. Delineation of groundwater potential zones in the crystalline basement terrain of SW-Nigeria: An integrated GIS and Remote Sensing approach. *Appl. Water. Sci.*, 4, 19-38. DOI: <https://doi.org/10.1007/s13201-013-0127-9>
- Gashaw, T., Tulu, T., Argaw, M. and Worqlul, A. W., 2017. Modeling the hydrological impacts of land use/land cover changes in the Andassa watershed, Blue Nile Basin, Ethiopia. *Science of The Total Environment*, 619-620, 1394-1408. DOI: <https://doi.org/10.1016/j.scitotenv.2017.11.191>
- GSI [Geological Survey of India], 2001. Geological Survey of India.
- Kadam, A. K., Kale, S. S., Pande, N. N., Pawar N. J. and Sankhua, R. N., 2012. Identifying potential rainwater harvesting sites of a semi-arid, basaltic region of western India using SCS-CN method. *Water resource manag*, 26, 2537-2554. DOI: <https://doi.org/10.1007/s11269-012-0031-3>
- Kadam, A. K., Wagh, V. M., Muley, A. A., Umrikar, B. N. and Sankhua, R. N., 2019. Prediction of water quality index using artificial neural network and multiple linear regression modelling approach in Shivganga River basin, India. *Modeling Earth Systems and Environment*, 1-12. DOI: <https://doi.org/10.1007/s40808-019-00581-3>
- Kadam, A., Kale, S., Umrikar, B., Sankhua, R. and Pawar, N., 2017. Identifying possible locations to construct soil-water conservation structures by using hydro-geological and geospatial analysis. *Hydrospatial Analysis*, 1(1), 18-27. DOI <https://doi.org/10.21523/gc3.17010103>

- Koch, M., Sugranes, L. S. and Mather, P. M., 1998. Identifying geo-indicators of land degradation in a semiarid Mediterranean environment using remote sensing. *Proceedings of SPIE - The International Society for Optical Engineering*, 3496. DOI: <https://doi.org/10.1117/12.332710>
- Kshirsagar, L. K. and Jadhav, P. B., 2000. Unmetamorphosed precambrian sedimentary sequence (Phonda group) of coastal Maharashtra. In *Field Workshop on Integration of the Kaladgi and Bhima Basins* (abstract volume), Geological Society of India, Bangalore, 8-10.
- Kumar, G. M., Agarwal, A. K. and Bali, R., 2008. Delineation of potential sites for water harvesting structures using Remote Sensing and GIS. *Journal of the Indian Society of Remote Sensing*, 36, 323-334. DOI: <https://doi.org/10.1007/s12524-008-0033-z>
- Kumar, S. K., Chandrasekar, N., Seralathan, P., Godson, P. S. and Magesh, N. S., 2011. Hydrogeochemical study of shallow carbonate aquifers, Rameswaram Island, India. *Environmental Monitoring and Assessment*, 184(7), 4127-4138. DOI: <https://doi.org/10.1007/s10661-011-2249-6>
- Maiti, S., Erram, V. C., Gupta, G. and Tiwari, R. M., 2012. ANN based inversion of DC Resistivity data for groundwater exploration in hard rock terrain of western Maharashtra, India. *Journal of hydrology*, 464-465, 294-308. DOI: <https://doi.org/10.1016/j.jhydrol.2012.07.020>
- Miller, V. C., 1953. A quantitative geomorphic study of drainage basin characteristics in the Clinch Mountain area, Virginia and Tennessee. Proj, NR 389-402, Tech rep 3. Columbia University, Department of Geology, ONR, New York.
- Nag, S. K. and Ghosh, P., 2012. Delineation of groundwater potential zone in Chhatna Block, Bankura District, West Bengal, India using remote sensing and GIS techniques. *Environmental Earth Science*, 70(5), 2115-2127. DOI: <https://doi.org/10.1007/s12665-012-1713-0>
- Nag, S. K., 1998. Morphometric analysis using remote sensing techniques in the chaka sub-basin, Purulia district, West Bengal. *J. Indian Society of Remote Sensing*, 26, 69-76. DOI: <https://doi.org/10.1007/BF03007341>
- Nagarajan, M. and Singh, S., 2009. Assessment of groundwater potential zones using GIS technique. *J. Indian Soc. Remote Sens.*, 37, 69-77. DOI: <https://doi.org/10.1007/s12524-009-0012-z>
- Naveenkumar, Soraganvi, V. S., and Hooli, S. S., 2015. Groundwater potential mapping in a part of malaprabha river basin using remote sensing data and geographic information system (GIS). *Journal of Environment and Earth Science*, 5(5), 41-47.
- Patil, A. and Panhalkar, S. S., 2019. Analytical hierarchy process for landslide hazard zonation of Southwestern Ghats of Maharashtra, India. *Disaster advances*, 12, 26-33.
- Prasad, R. K., Montal, N. C., Banerjee, P, Nandakumar, M. V. and Singh, V. S., 2008. Deciphering potential groundwater zone in hard rock through the application of GIS. *Environmental Geology*, 55(3), 467-475. DOI: <https://doi.org/10.1007/s00254-007-0992-3>
- Ramamoorthy, P. and Rammohan, V., 2015. Assessment of groundwater potential zone using remote sensing and GIS in Varahanadhi watershed, Tamilnadu, India. *International Journal for Research in Applied Science and Engineering Technology*, 3(5), 695-702.
- Rao, J. P., Harikrishna, P. and Rao, S. B., 2004. An integrated study on groundwater resource of Peddagedda watershed. *Journal of the Indian Society Remote Sensing*, 32, 9-14. DOI: <https://doi.org/10.1007/BF03030890>
- Saaty, T. L., 1980. *Decision making for leaders: the analytic hierarchy process for decisions in a complex world*. 3rd Revised Edition (2013). RWS publications.
- Senthil Kumar, G. R. and Shankar, K., 2014. Assessment of groundwater potential zones using GIS. *Frontiers in Geosciences*, 2(1), 1-10.
- Shailaja, G., Kadam, A. K., Gupta, G., Umrikar, B. N. and Pawar, N. J., 2019. Integrated geophysical, geospatial and multiple-criteria decision analysis techniques for delineation of groundwater potential zones in a semi-arid hard-rock aquifer in Maharashtra, India. *Hydrogeology Journal*, 27(2), 639-654. DOI: <https://doi.org/10.1007/s10040-018-1883-2>
- Sikdar, P. K., Chakraborty, S., Enakshi Adhya and Paul, P. K., 2004. Land use/land cover changes and groundwater potential zoning in and around Raniganj coal mining area, Bardhaman district, West Bengal - A GIS and Remote Sensing approach. *Journal of Spatial Hydrology*, 4(2), 1-24.
- Singhai, A., Das, S., Kadam, A. K., Shukla, J. P., Bundela, D. S. and Kalashetty, M., 2019. GIS-based multi-criteria approach for identification of rainwater harvesting zones in upper Betwa sub-basin of Madhya Pradesh, India. *Environment, Development and Sustainability*, 21(2), 777-797. DOI: <https://doi.org/10.1007/s10668-017-0060-4>
- Suja Rose, R. S. and Krishnan, N., 2009. Spatial analysis of groundwater potential using remote sensing and GIS in the Kanyakumari and Nambiyar basins, India. *J. Indian Soc. Remote Sens.*, 37, 681-692. DOI: <https://doi.org/10.1007/s12524-009-0058-y>
- Sukumar, S., and Sankar, K., 2010. Delineation of potential zones for artificial recharge using GIS in Theni district, Tami Nadu, India, *International Journal of Geomatics and Geosciences*, 1(3), 639-648.
- Teixeira, J., Chaminé, H. I., Marqus, J. E, Gomes, A., Carvalho, J. M., Albertí, A. P. and Rocha, F. T., 2008. Integrated approach of hydrogeomorphology and GIS mapping to the evaluation of groundwater resources: An example from the hydro mineral system of Caldas Da Cavaca, NW Portugal. *Global Groundwater Resource and Management*, 227-249.
